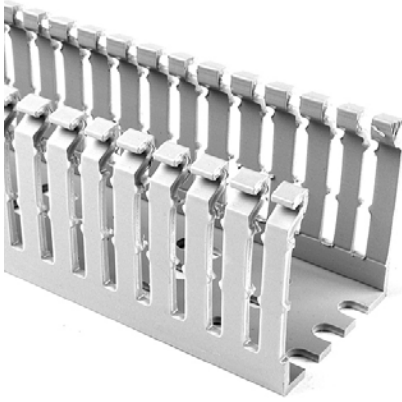


Specification Sheet

Part Number: 184-11010



High Density Slotted Wall Wiring Duct, 1" x 1.5", Non-Adhesive, PVC, Gray, 120ft/Carton

Article Number	184-11010
Type	SLHD1X1.5
Color	Gray (GY)
Features & Benefits	<ul style="list-style-type: none">•Narrow fingers reduce fanning of the wires to the terminal blocks, presenting a neater appearance.•Each finger is provided with a double restriction to hold wires in the bottom portion of the duct, allowing for easier installation.•Mounting holes are uniform in size and are offered every 2 inches to accommodate compact designs and ease installation.•Optional covers snap on and off easily, and are provided with a non-slip lining that insures the covers remain in place during vibration.
Quantity Per	carton

Product Description

Pro-Duct high-density slotted-wall wiring duct features narrow fingers, equaling a 2 to 1 finger ratio compared to standard slotted wiring duct. With the narrow fingers, compact designs and components are more easily accommodated.

Short Description

High Density Slotted Wall Wiring Duct, 1" x 1.5", Non-Adhesive, PVC, Gray, 120ft/Carton

Global Part Name

SLHD1X1.5-PVC-GY

Technical Description

Non-Adhesive

Length L (Imperial)

6.0

Length L (Metric)

1.83

Width W (Imperial)

1.0

Width W (Metric)

25.4

Height H (Imperial)

1.57

Height H (Metric)

39.9

Mounting Hole Centers (Imperial)

2.0

Material

Polyvinylchloride (PVC)

Material Shortcut

PVC

Flammability

Self-Extinguishing

Halogen free

No

Operating Temperature (Metric)

+122°F (+50°C)

Reach Complaint(Article 33)

No

ROHS Complaint

Yes

Certification/Specification WEB

EN 50085-1:2005 + A1:2013 UL EN 50085-2-3_1A CSA

UL Recognized (US)

Yes

Package Quantity(Imperial)

120

Package Quantity (Metric)

36.58

Customs Number

3925900000